



ComCase® *P*

Integrated Mobile Access Router - NEMA 6



- Cisco 3200 Series Router(s)
- Cisco WMIC for Cisco 3200 Series Router(s)
- NEMA 6 Pole Mount Enclosure
- MIL STD 810F Fanless Design
- Passive Conduction Cooling
- Protective End Cap Cover
- -20 to +55 Degrees Celsius
- Integrated AC-DC Power Supply
- ComCase P Base Components:
 - Cisco 3230-3WMIC
 - AC/DC Power Supply
 - Protective End Cap Cover
 - Mounting Bracket & Pole Mount Kit
- AC Power Cable Included

The Western DataCom ComCase® *P* is a rugged form factor, MIL STD 810F, pole mountable solution utilizing the Cisco® 3200 Series Wireless and Mobile Router(s) including the Cisco® WMIC for Cisco 3200 Series Router(s).

The ComCase® *P* is a 14 slot aluminum enclosure that includes an integrated AC-DC power supply for connection directly to AC power sources from 85 to 264VAC.

The ComCase® *P* is NEMA 6 approved, maintains emissions and safety approvals (IEC 60950 and EN55022) and has been tested to the most stringent environmental standards.

Its rugged fanless design eliminates concerns of dust and water. All inlets and outlets are gasketed, watertight and the enclosure is totally sealed to outside elements. Easy access is provided via the protective end cap cover which opens 180 degrees.

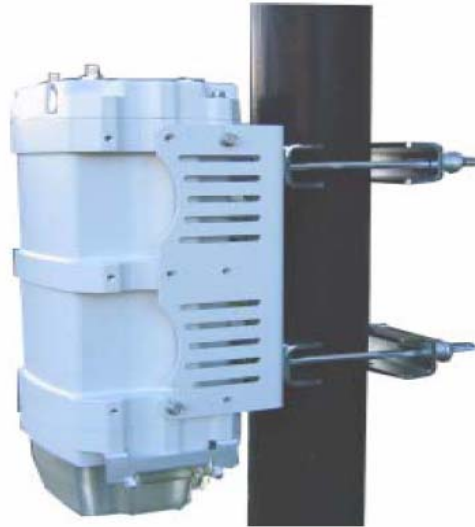
The ComCase® *P* is a fully configurable solution allowing customer applications to dictate the cards populated in the enclosure.





ComCase® P

Integrated Mobile Access Router - NEMA 6



General Specifications:

Interfaces: 2 - Serial Interfaces
3 - 10/100 Ethernet
3 - WMIC Console
1 - MAR Console
1 - MAR Auxiliary
6 - RPTNC Antenna Connectors

Size: 8.75" x 9.75" x 15", <26lbs.

Power:

85 - 264VAC Input

Standard Configuration:

Base Cards: Cisco 3230MARC
Cisco 3201WMIC (3)

Video Bundle: WDC IVS

Cellular/GPS Bundle: MobileCom w/GPS

Crypto Bundle: WDC IPE-10M
WDC IPE-10H



P.O. Box 45113
Westlake, OH 44145-0113

Phone: 800-262-3311/440-835-1510
Fax: 440-835-9146
<http://www.western-data.com>
E-mail: wdc@western-data.com

The data on this sheet is summary in nature and subject to change. Please refer to this product's technical manual for complete details. Printed in the USA. R20061102a

Western DataCom Key Partner:

12-Month Limited Warranty:

Refer to the user manual for details on Western DataCom's exclusive limited warranty and extended warranty programs. Free technical support for life of product.

ComCase® P